

Table :01 - Door + Poster Frame

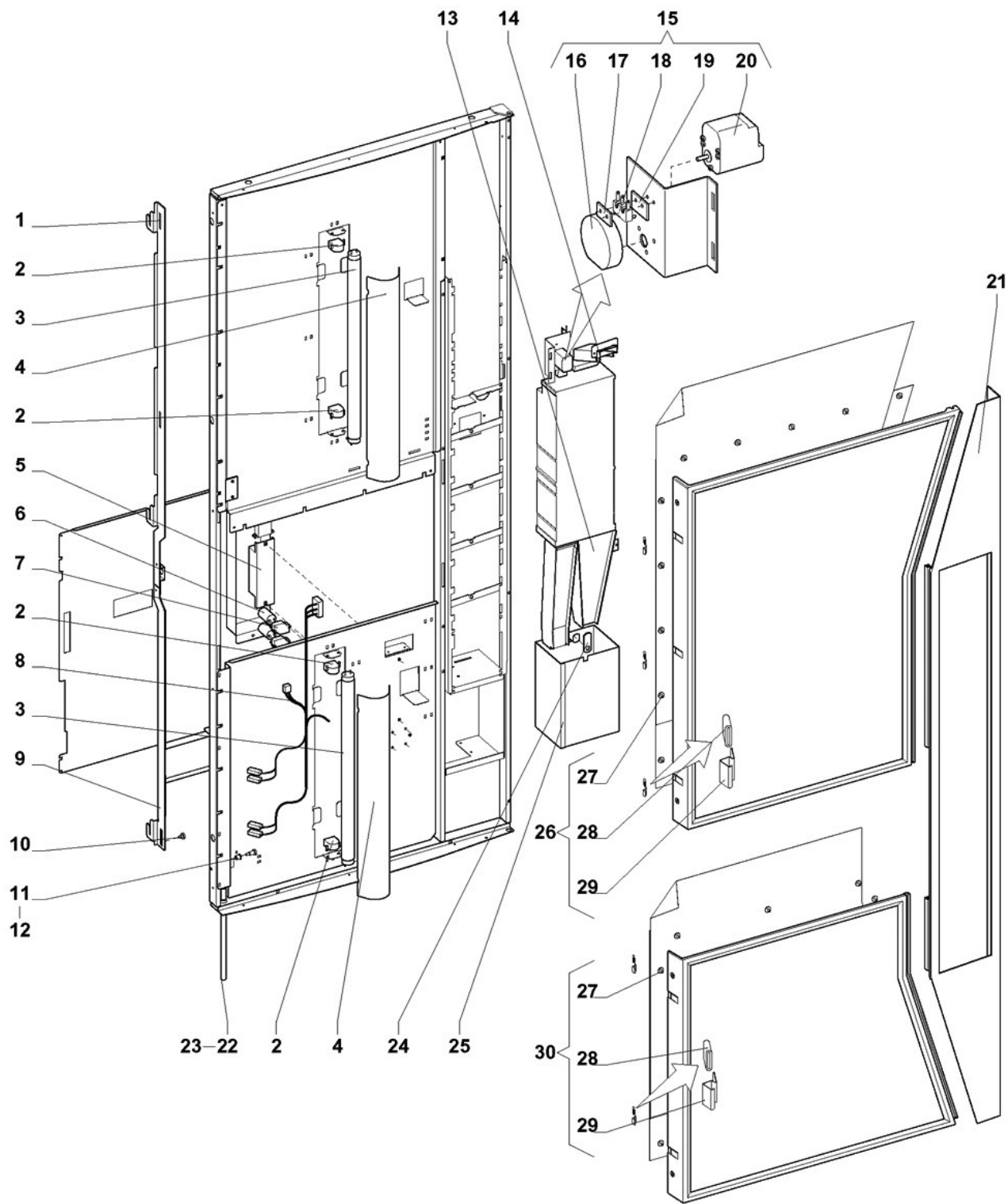


Table :01 - Door + Poster Frame

|    | Code      | Description                   | Notes |
|----|-----------|-------------------------------|-------|
| 1  | 30953900  | UPPER LOCKING RAIL            |       |
| 2  | 41704300  | SOCKET F. FLUORESCENT TUBE    |       |
| 3  | 41701415  | FLUORESCENT TUBE 15W          |       |
| 4  | 30959400  | COVER FOR FLUORESCENT TUBE    |       |
| 5  | 41703330  | CHOKE COIL                    |       |
| 6  | 41700401  | STARTER                       |       |
| 7  | 41705200  | SOCKET F. STARTER             |       |
| 8  | 42387200  | HARNESS, DOOR LIGHT           |       |
| 9  | 30950100  | LOWER LOCKING GUIDE           |       |
| 10 | 00001034  | COLLAR SCREW M4               |       |
| 11 | 00005031  | BUSHING WITH COLLAR           |       |
| 12 | 09004025  | SCREW M5X16                   |       |
| 13 | 30965000  | COIN CHUTE                    |       |
| 14 | 30965800  | COIN INSERT CHUTE             |       |
| 16 | 39461800  | ECCENTRIC                     |       |
| 17 | 30448800  | THREADING PIECE               |       |
| 18 | 41308800  | MICRO SWITCH, SMALL           |       |
| 19 | 14262700  | INSULATION F. SWITCH          |       |
| 20 | 41534000  | MOTOR F COIN-RETURN MECHANISM |       |
| 21 | 39275900  | ALU PROFILE                   |       |
| 22 | 31004600  | SUPPORT FOR DOOR              |       |
| 23 | 09083250  | NUT M10                       |       |
| 24 | 30461400  | LOCKING LATCH F CASH BOX      |       |
| 25 | 30962400  | CASH BOX                      |       |
| 26 | 30954600S | UPPER POSTER FRAME, MOUNT.    |       |
| 27 | 39720000  | PLUG F POSTER FRAME           |       |
| 28 | 35021401  | CAP PVC, GREEN                |       |
| 29 | 75813400  | KIT, 5 X SPRING + CAP GREEN   |       |
| 30 | 30954700S | LOWER POSTER FRAME, MOUNT.    |       |

Table :02 - Parts for Kev Pad

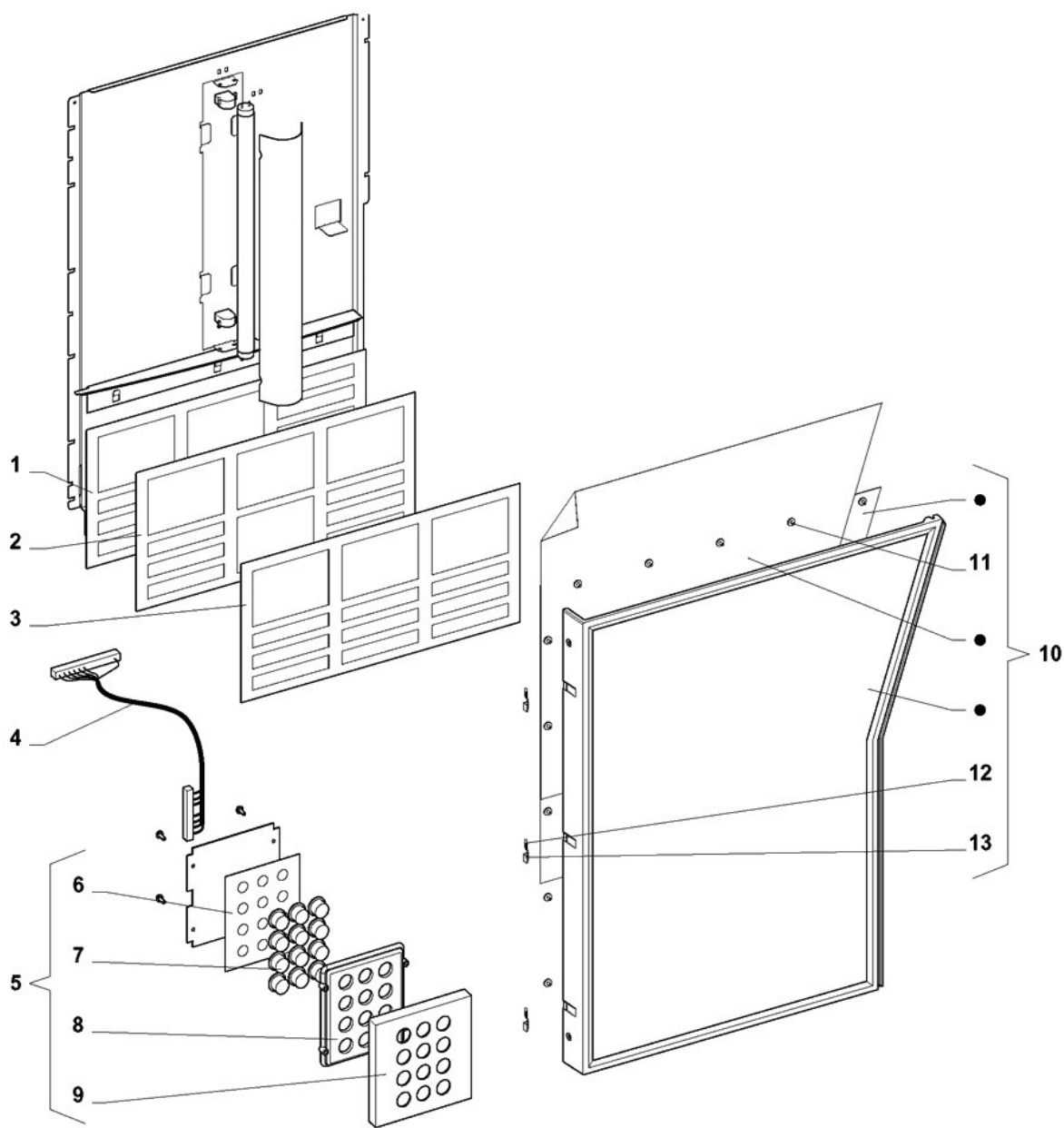


Table :02 - Parts for Key Pad

|    | Code      | Description                         | Notes |
|----|-----------|-------------------------------------|-------|
| 1  | 39708400  | MENU BOARD NO. 3                    |       |
| 2  | 39708300  | MENU BOARD NO. 2                    |       |
| 3  | 39708200  | MENU BOARD NO 1                     |       |
| 4  | 42390500  | HARNESS, KEY PAD                    |       |
| 5  | 31033100  | KEYPAD, MOUNTED                     |       |
| 6  | 0V0070    | MEMBRANE CONTROL PANEL              |       |
| 7  | 0V4233    | SELECTION BUTTONS                   |       |
| 8  | 0V4228    | MEMBRANE-TYPE PUSH-BUTT.PANEL ELEM. |       |
| 9  | 39708100  | COVER FOR KEYPAD                    |       |
| 10 | 31033300S | UPPER FOSTER FRAME, KEY PAD         |       |
| 11 | 39720000  | PLUG F POSTER FRAME                 |       |
| 12 | 35021401  | CAP PVC, GREEN                      |       |
| 13 | 75813400  | KIT, 5 X SPRING + CAP GREEN         |       |

Table :03 - Selection Module

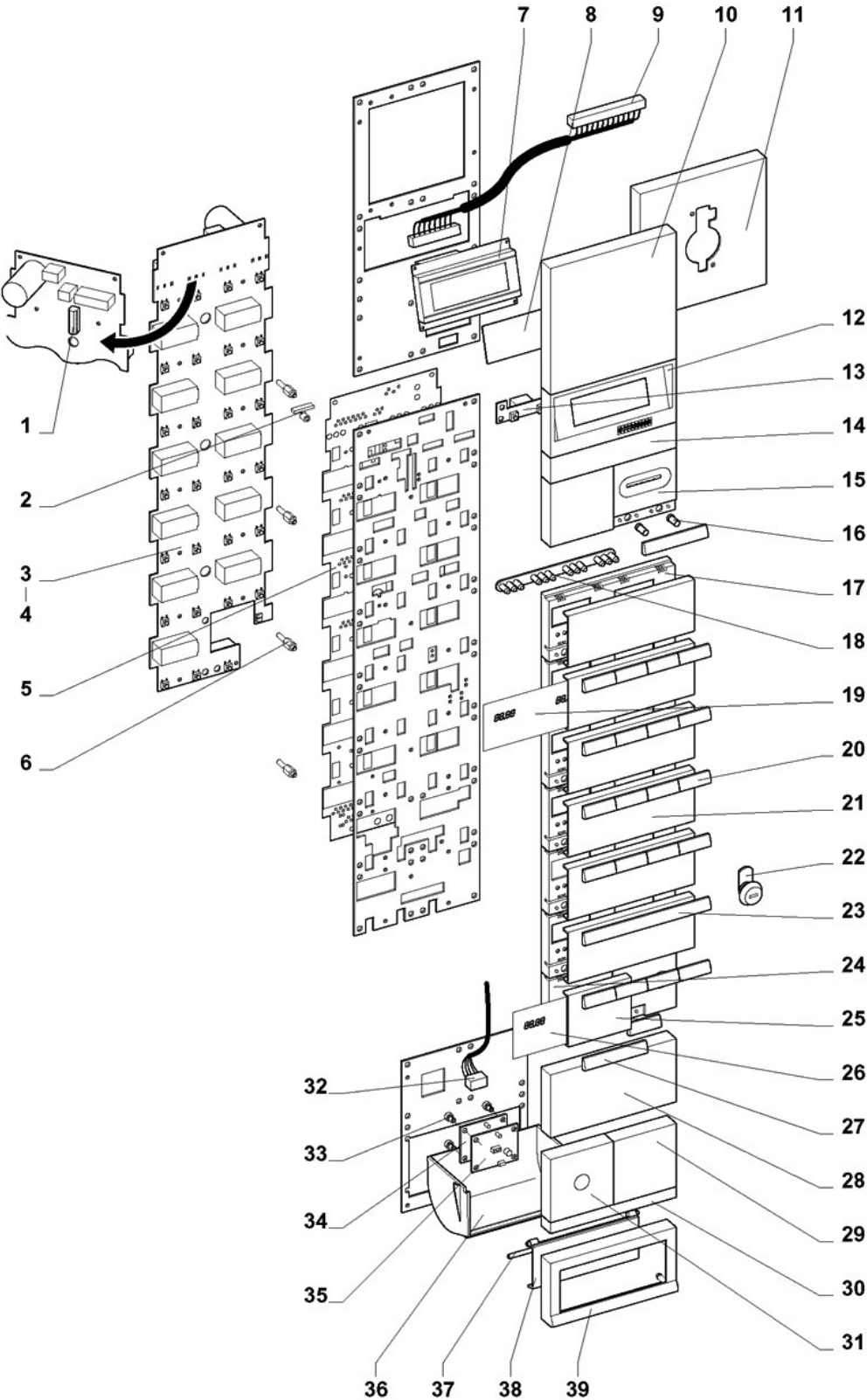


Table :03 - Selection Module

|    | Code      | Description                    | Notes |
|----|-----------|--------------------------------|-------|
| 1  | 48002003  | SPC PROGRAM                    |       |
| 2  | 39599300  | SPRING                         |       |
| 3  | 47124800  | CIRCUIT BOARD                  |       |
| 4  | 39463400  | CLIP F. PRINT BOARD            |       |
| 5  | 39701600  | FOIL FOR SPC                   |       |
| 6  | 31001200  | STAYBOLT F SELECTION PANEL     |       |
| 7  | 48560600  | LCD DISPLAY                    |       |
| 8  | 39599800  | GLASS FOR DISPLAY              |       |
| 9  | 42385700  | HARNESS, DISPLAY               |       |
| 10 | 39595200  | BLANKING MODULE, FULL WIDTH    |       |
| 11 | 39702200  | COVER PROFILE CONPAS           |       |
| 12 | 39595500  | HOLDER FOR DISPLAY             |       |
| 13 | 47125400  | RETURN CIRCUIT BOARD           |       |
| 14 | 39596100  | DISTANCE PIECE, UPPER          |       |
| 15 | 39753500  | COIN INSERT                    |       |
| 16 | 39716800  | FASTENER                       |       |
| 17 | 39595800  | BASE MODULE                    |       |
| 18 | 39599200  | LIGHT GUIDE                    |       |
| 19 | 77439801S | PRICE SIGN 88,88 LARGE         |       |
| 20 | 39596700  | PUSH BUTTON, QUARTER SIZE      |       |
| 21 | 39595900  | HOLDER F LABEL, LARGE          |       |
| 22 | 39627401  | LOCK FOR MULTI BREW            |       |
| 23 | 75816300  | 3 PCS PUSH BUTTONS, FULL SIZE  |       |
| 24 | 39597200  | BASE MODULE, HALF SIZE         |       |
| 25 | 39596000  | HOLDER F LABEL, SMALL          |       |
| 26 | 77439802S | PRICE SIGN 88,88 SMALL         |       |
| 27 | 75816200  | 10 PCS PUSH BUTTONS, HALF      |       |
| 28 | 39595300  | BLANKING MODULE HALF WIDTH     |       |
| 29 | 39595400  | BLANKING MODULE, QUARTER WIDTH |       |
| 30 | 39596200  | DISTANCE PIECE, LOWER          |       |
| 31 | 39596300  | COVER, OPTICAL INTERFACE       |       |
| 32 | 42389600  | HARNESS, OPTICAL INTERFACE     |       |
| 33 | 39463400  | CLIP F. PRINT BOARD            |       |
| 34 | 47125900  | CIRCUIT BOARD, IRDA INTERFACE  |       |
| 35 | 47125800  | CIRCUIT BOARD, ASK INTERFACE   |       |
| 36 | 39596600  | COIN RETURN CUP                |       |
| 37 | 39283700  | COUNTER WEIGHT F FLAP, LARGE   |       |
| 38 | 39753600  | FLAP F COIN RETURN CUP, LARGE  |       |
| 39 | 39596400  | FRAME F COIN RETURN CUP, LARGE |       |

Table :04 - Gun Dispenser

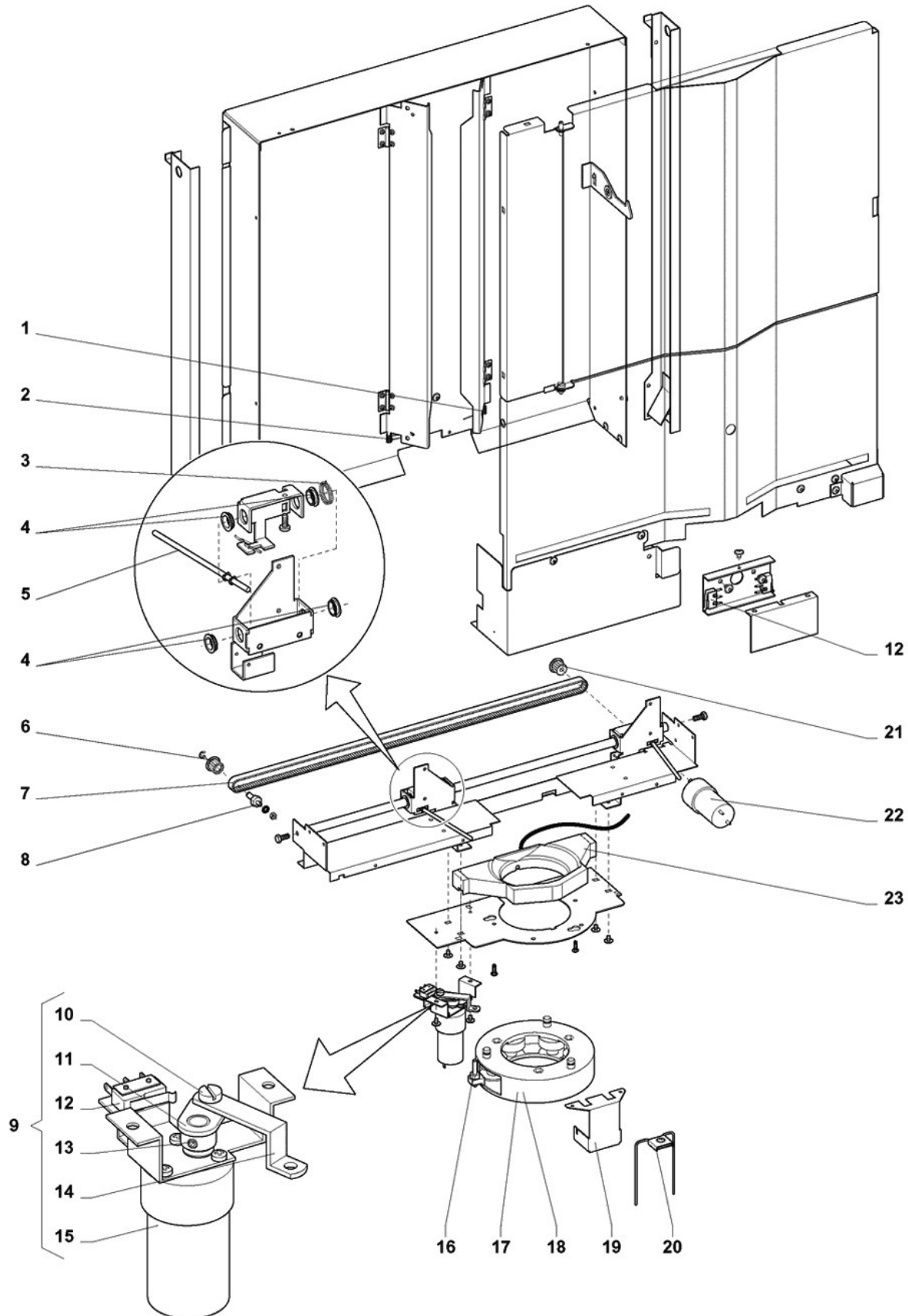


Table :04 - Cup Dispenser

|    | Code      | Description                    | Notes |
|----|-----------|--------------------------------|-------|
| 1  | 39632802  | SPRING FOR CUP GUIDE LEFT      |       |
| 2  | 39632801  | SPRING FOR CUP GUIDE RIGHT     |       |
| 3  | 39651300  | PRESSURE SPRING                |       |
| 4  | 39436801  | SLIDE BEARING Ø10              |       |
| 5  | 39272401  | PIN F RELEASER                 |       |
| 6  | 39703200  | PULLEY F TOOTHED BELT Z=16, Ø6 |       |
| 7  | 39535806  | TOOTHED BELT PG 981 3M-09 HTD  |       |
| 8  | 39651400  | SHAFT F. GEAR WHEEL            |       |
| 9  | 30604800S | BRACKET FOR DROP RING MOTOR    |       |
| 10 | 00001007  | COLLAR SCREW M4 X 6            |       |
| 11 | 30537400  | CRANK                          |       |
| 12 | 41308800  | MICRO SWITCH, SMALL            |       |
| 13 | 09071012  | POINTED SCREW M4X5             |       |
| 14 | 30537600  | TENSION ROD FOR DROP RING      |       |
| 15 | 41533801  | MOTOR RB300036-00501           |       |
| 16 | 30087000  | DRIVER PIN                     |       |
| 17 | 30881703  | CUP DROP RING 7C W. PINS       |       |
| 18 | 30881702  | CUP DROP RING 7H W. PINS       |       |
| 19 | 30590900  | HOLDER FOR BRAKE               |       |
| 20 | 30634400S | CUP BRAKE, ASS.                |       |
| 21 | 39557800  | WHEEL, TOOTHED BELT Z=16, Ø5   |       |
| 22 | 41533802  | MOTOR RB300120-00501           |       |
| 23 | 75801900  | PILE GUIDE W. CUP SENSOR       |       |



Table :05 - Gun Catcher Mechanism

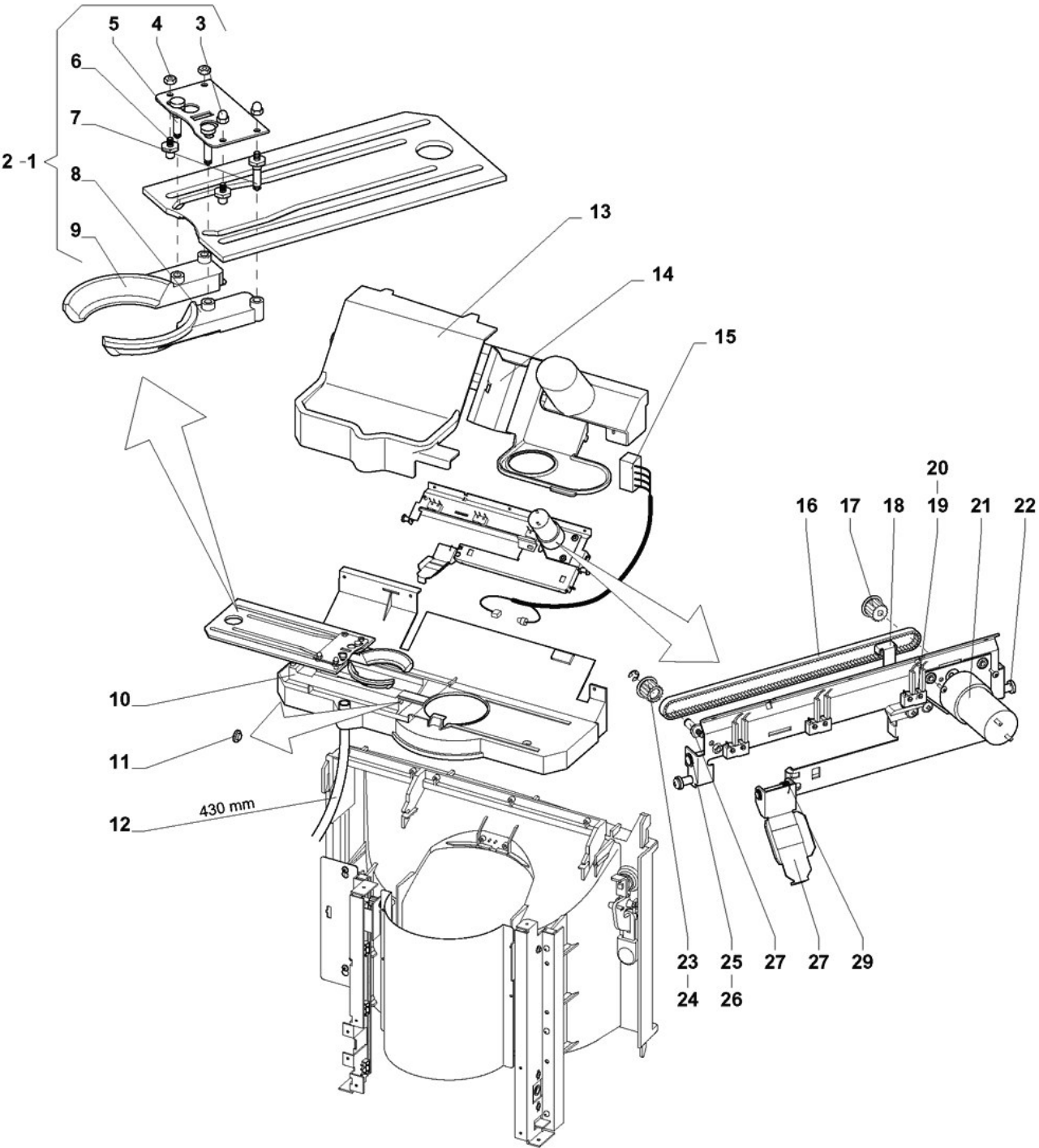


Table :05 - Cup Catcher Mechanism

|    | Code      | Description                    | Notes |
|----|-----------|--------------------------------|-------|
| 1  | 30956100S | CUP CATCHER 7C, CPL.           |       |
| 2  | 30953200S | CUP CATCHER 7H, CPL.           |       |
| 3  | 09106502  | CAP HEAD NUT                   |       |
| 4  | 09102520  | NUT M4                         |       |
| 5  | 39259800  | GUIDE PIN                      |       |
| 6  | 39276200  | FIXED GUIDING PIN              |       |
| 7  | 39260100  | PIN FIXED                      |       |
| 11 | 39533900  | OPTO DIODE GLASS               |       |
| 12 | 39470504  | HOSE Ø13/Ø9                    |       |
| 13 | 39702500  | DRIP TRAY                      |       |
| 14 | 39593800  | CUP SLIDE                      |       |
| 15 | 42386600  | HARNESS, OPTO SENSOR           |       |
| 16 | 39535807  | TOOTHED BELT 3 MR 480-06       |       |
| 17 | 39557800  | WHEEL, TOOTHED BELT Z=16, Ø5   |       |
| 18 | 31084600  | BELT HOLDER                    |       |
| 19 | 41305700  | MICRO SWITCH                   |       |
| 20 | 09009408  | SCREW CYL. H. M2X8             |       |
| 21 | 41529624  | MOTOR                          |       |
| 22 | 39263500  | BUSH F CLOSING MECHANISM       |       |
| 23 | 39703200  | PULLEY F TOOTHED BELT Z=16, Ø6 |       |
| 24 | 09124110  | RETAINING RING                 |       |
| 25 | 39276100  | GUIDE                          |       |
| 26 | 39436803  | SLIDE BEARING Ø8               |       |
| 27 | 39641200  | SHAFT F. PULLEY                |       |
| 28 | 30637500  | COUPLING                       |       |
| 29 | 39266500  | SPRING F LOCK                  |       |

Table :06 - Gun Station

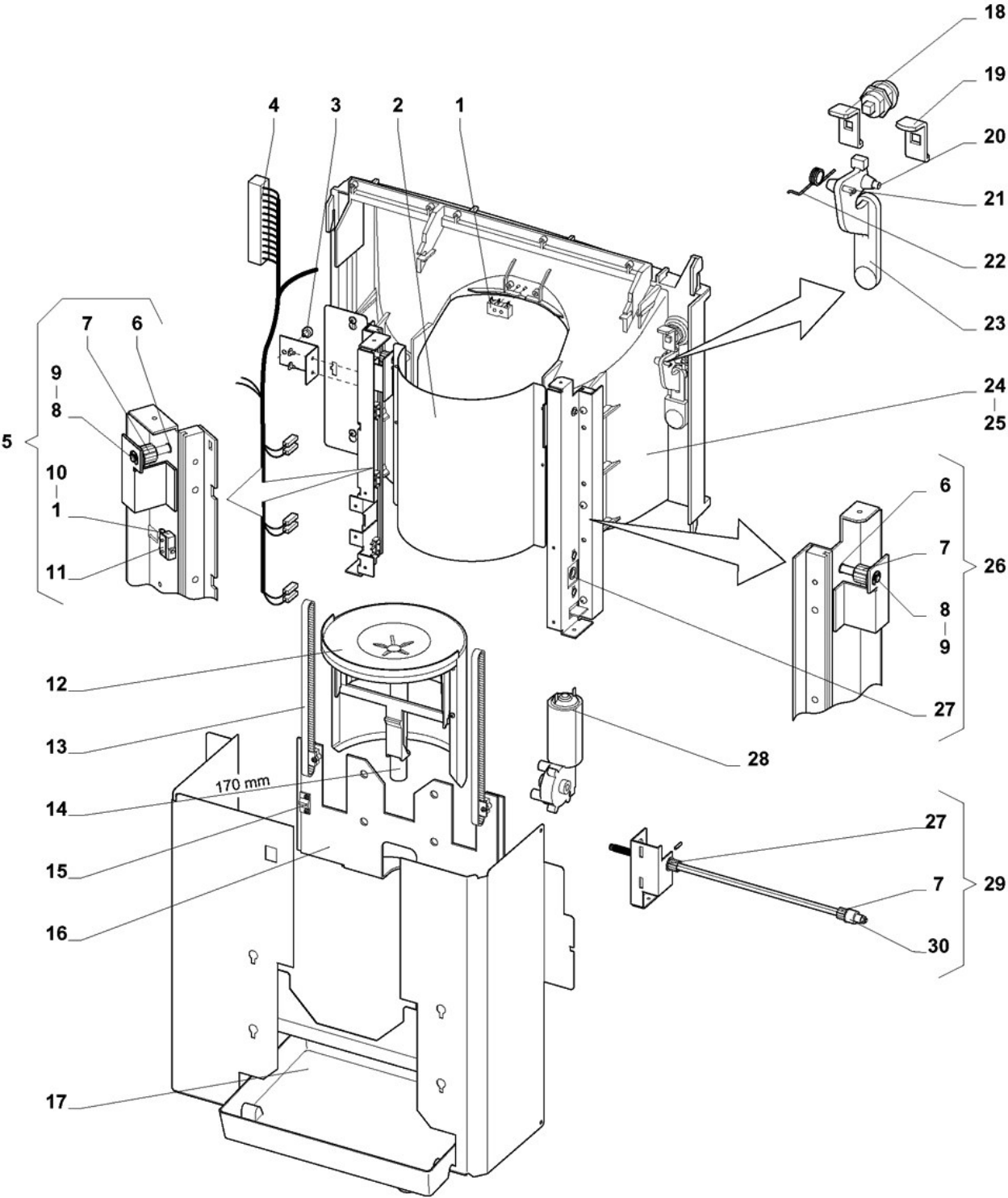


Table :06 - Cup Station

|    | Code      | Description                    | Notes |
|----|-----------|--------------------------------|-------|
| 1  | 41305700  | MICRO SWITCH                   |       |
| 2  | 30560800  | ALU SHIELD FOR CUP STATION     |       |
| 3  | 39412601  | RUBBER STOP                    |       |
| 4  | 42385400  | HARNESS, CUP STATION           |       |
| 5  | 30949700S | RIGHT SLIDING RAIL             |       |
| 6  | 39436802  | SLIDE BEARING Ø6               |       |
| 7  | 39533500  | PULLEY, TOOTHED BELT Z=16, 6X6 |       |
| 8  | 39258700  | SHAFT FOR GEAR WHEEL           |       |
| 9  | 09124115  | RETAINING RING RS 5            |       |
| 10 | 39637700  | ADJUST.PIECE F MICRO SWITCH    |       |
| 11 | 30448800  | THREADING PIECE                |       |
| 12 | 30638900S | CUP PLATFORM, MOUNT.           |       |
| 13 | 39535802  | TOOTHED BELT                   |       |
| 14 | 39470504  | HOSE Ø13/Ø9                    |       |
| 15 | 39534300  | ACTIVATING DEVICE              |       |
| 16 | 30562400S | BRIDGE, MOUNT.                 |       |
| 17 | 39598900  | DRIP TRAY                      |       |
| 18 | 31001600  | LOCKING LATCH F DOOR           |       |
| 19 | 31018100  | LOCKING LATCH, RIELDA          |       |
| 20 | 39638600  | SHAFT FOR DOOR HANDLE          |       |
| 21 | 00000231  | THREADED PIN                   |       |
| 22 | 39234400  | SPRING                         |       |
| 23 | 39234300  | DOOR HANDLE                    |       |
| 24 | 39592200  | CUP STATION                    |       |
| 25 | 39533800  | GLASS F OPTO DIODE             |       |
| 26 | 30949600S | LEFT SLIDING RAIL              |       |
| 27 | 39436801  | SLIDE BEARING Ø10              |       |
| 28 | 41529100  | MOTOR                          |       |
| 29 | 30953700S | MOTOR BRACKET                  |       |
| 30 | 39540900  | BEARING                        |       |

Table :07 - Cabinet and Electric parts

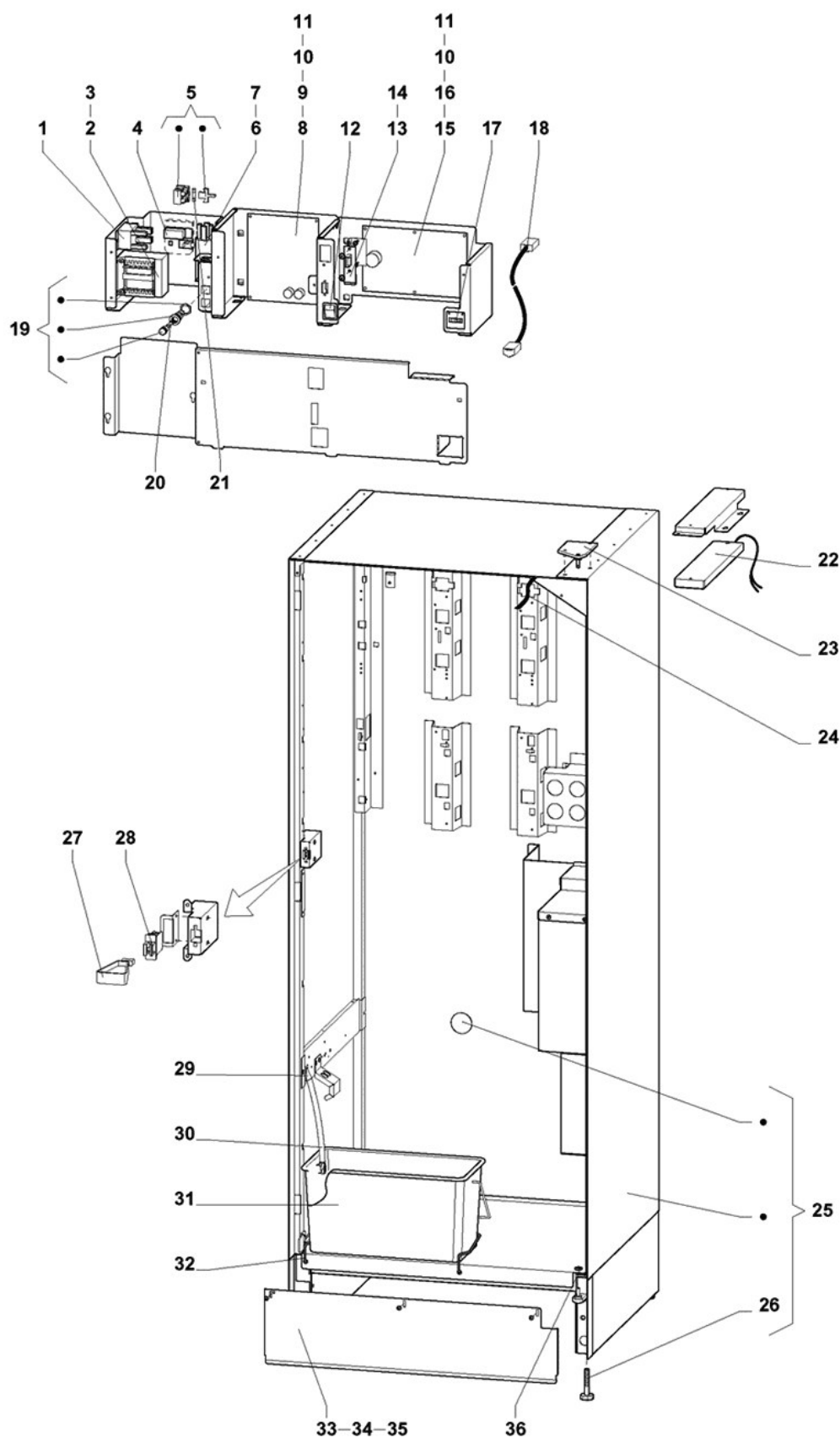


Table :07 - Cabinet and Electric parts

|    | Code      | Description                     | Notes |
|----|-----------|---------------------------------|-------|
| 1  | 41414000  | RELAY                           |       |
| 2  | 41611100  | TRANSFORMER 230V-50HZ           |       |
| 3  | 39224700  | SPEED CLIPS                     |       |
| 4  | 098796    | TERMINAL BOARD                  |       |
| 5  | 097241    | 3-POLE TERMINAL BOARD W/CARRIER |       |
| 6  | 41815700  | NOISE CAPACITOR                 |       |
| 7  | 41815702  | NUT                             |       |
| 8  | 47125600  | CPU CIRCUIT BOARD "TO JUNE 06"  |       |
| 9  | 48002004S | CPU BOARD, PROGRAMMED           |       |
| 10 | 41005801  | FIXTURE F. PC BOARD             |       |
| 11 | 58010410  | THREADED SPACER                 |       |
| 12 | 41303603  | TILTING SWITCH                  |       |
| 13 | 47126300  | CIRCUIT BOARD F UP-KEY          |       |
| 14 | 00005545  | SPACING BUSH                    |       |
| 15 | 47124900  | VMC CIRCUIT BOARD               |       |
| 16 | 48002002  | VMC PROGRAM                     |       |
| 17 | 0V2284    | SCALER 24 VOLT                  |       |
| 18 | 42383901  | HARNESS, TELCON 1400MM          |       |
| 19 | 0V3201    | FUSE HOLDER                     |       |
| 20 | 41008402  | FUSE 10A 5X20 MM                |       |
| 21 | 41008401  | FUSE 2A 5X20 MM                 |       |
| 22 | 42390100  | SERVICE LIGHT                   |       |
| 23 | 30937400  | UPPER HINGE FOR CABINET         |       |
| 24 | 31018300  | SECURING STRAP L=315            |       |
| 25 | 30933300S | CABINET, ASS.                   |       |
| 26 | 39656500  | LEVELLER                        |       |
| 27 | 0V1654    | SWITCH KEY                      |       |
| 28 | 41308701  | DOOR SWITCH                     |       |
| 29 | 39420500  | LEAD-IN F. HOSE                 |       |
| 30 | 42387100  | SENSOR FOR WASTE BUCKET         |       |
| 31 | 39714500S | WASTE BUCKET, 11L INCL LABEL    |       |
| 32 | 39714600  | BRACE F WASTE BUCKET            |       |
| 33 | 31074555  | KICK PLATE, BLACK               |       |
| 34 | 31074525  | KICK PLATE, WHITE               |       |
| 35 | 31074590  | KICK PLATE, SPEC. COLOUR        |       |
| 36 | 29932900  | WASHER                          |       |

Table :08 - Water Svstem

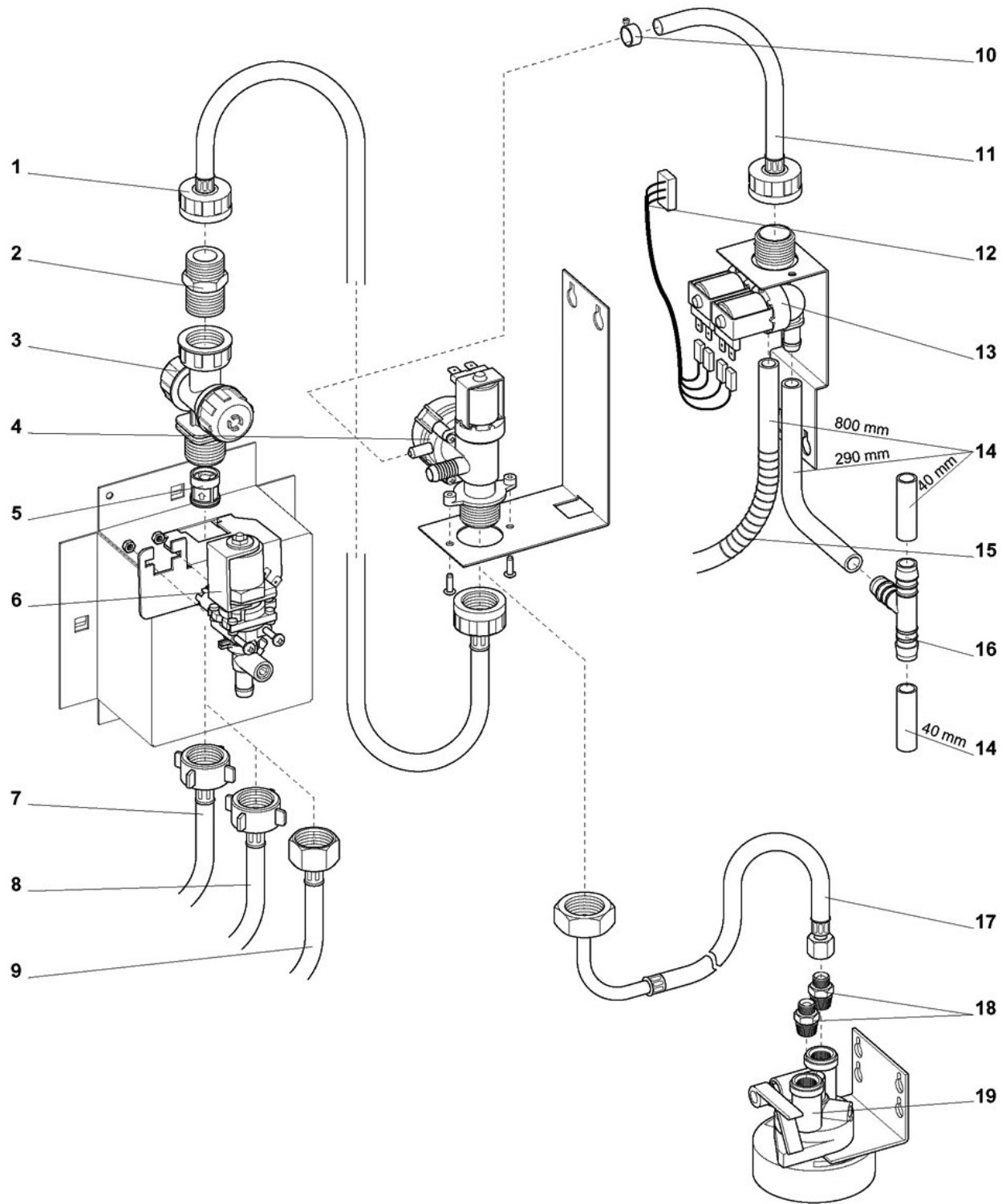


Table :08 - Water System

|    | Code     | Description                   | Notes |
|----|----------|-------------------------------|-------|
| 1  | 39497200 | HOSE 3/4"-3/4"                |       |
| 2  | A-0862   | COLLAR NIPPLE 3/4"            |       |
| 3  | 39269000 | WATER FILTER                  |       |
| 4  | 41535400 | INLET VALVE 24VDC             |       |
| 5  | 39312200 | REFLUX VALVE                  |       |
| 6  | 41532400 | 24VDC VALVE, MÜLLER           |       |
| 7  | 39655700 | CONNECTING HOSE WIRSBO 1/2    |       |
| 8  | 35092000 | CONNECTING HOSE WIRSBO 3/4"   |       |
| 9  | 39649100 | CONNECTING HOSE 3/8" DECS     |       |
| 10 | 39202515 | HOSE CLIP                     |       |
| 11 | 31085000 | CONNECTING HOSE 3/4" SPEC.    |       |
| 12 | 42390400 | HARNESS, COLD WATER INJECTION |       |
| 13 | 41533700 | DOUBLE INLET VALVE 24V DC     |       |
| 14 | 39470504 | HOSE Ø13/Ø9                   |       |
| 15 | 30122400 | SPRING F HOSE                 |       |
| 16 | 36027100 | T-PIECE, D8,6-13              |       |
| 18 | 39312500 | NIPPLE 1/4"-3/8"K             |       |
| 19 | 39207902 | COVER FOR FILTER              |       |



Table :09 - Boiler

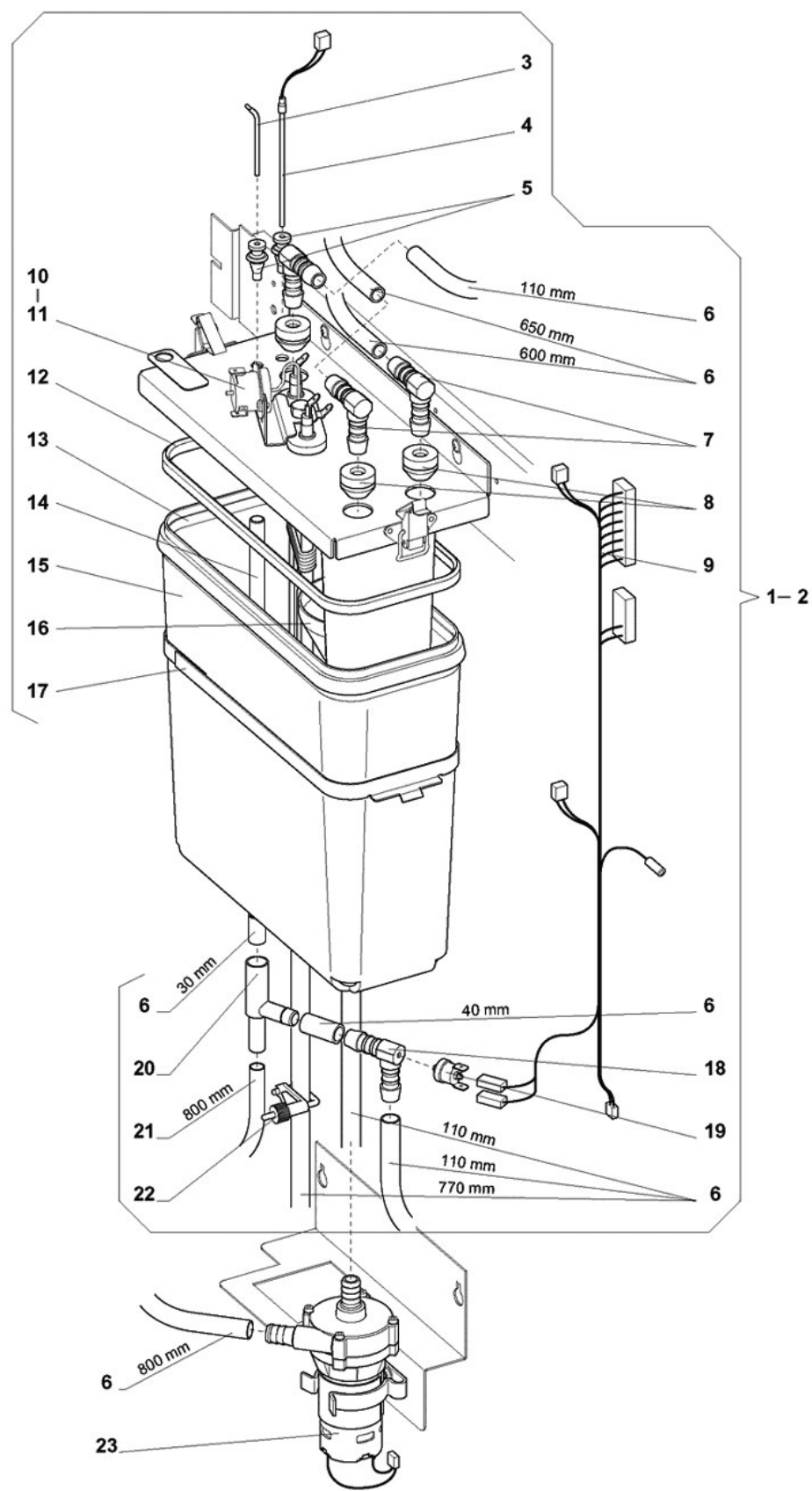


Table :09 - Boiler

|    | Code      | Description                  | Notes |
|----|-----------|------------------------------|-------|
| 1  | 31005600S | WATER TANK, MOUNT. 2000W     |       |
| 2  | 31005600S | WATER TANK, MOUNT. 2000W     |       |
| 3  | 29776912  | ELECTRODE 50 MM              |       |
| 4  | 42387300  | TEMPERATURE SENSOR, KPL      |       |
| 5  | 30742401  | HOLDER FOR ELECTRODE         |       |
| 6  | 39470504  | HOSE Ø13/Ø9                  |       |
| 7  | 35012301  | ANGLE PIECE WS12             |       |
| 8  | 39550200  | SILICONE GASKET              |       |
| 9  | 42393200  | HARNESS FOR WATER TANK       |       |
| 10 | 41611002  | HEATING ELEMENT 2,0 KW       |       |
| 12 | 39590700  | GASKET                       |       |
| 13 | 39589100  | WATER TANK                   |       |
| 14 | 31017900  | OVERFLOW PIPE                |       |
| 15 | 39705901  | INSULATION F WATER TANK 7600 |       |
| 16 | 39709500  | FUNNEL F WATER TANK          |       |
| 17 | 30939400  | SUPPORT                      |       |
| 18 | 31018600  | ANGLE PIECE, DRILLED         |       |
| 19 | 41407402  | SAFETY THERMOSTAT 80°C       |       |
| 20 | 094185    | CODENSE RECOVERY UNION       |       |
| 21 | 39470503  | HOSE Ø9,5/Ø6                 |       |
| 22 | 39200215  | HOSE CLAMP                   |       |
| 23 | 42393100  | WATER PUMP, ASS.             |       |

Table :10 - Mixing Unit: IN

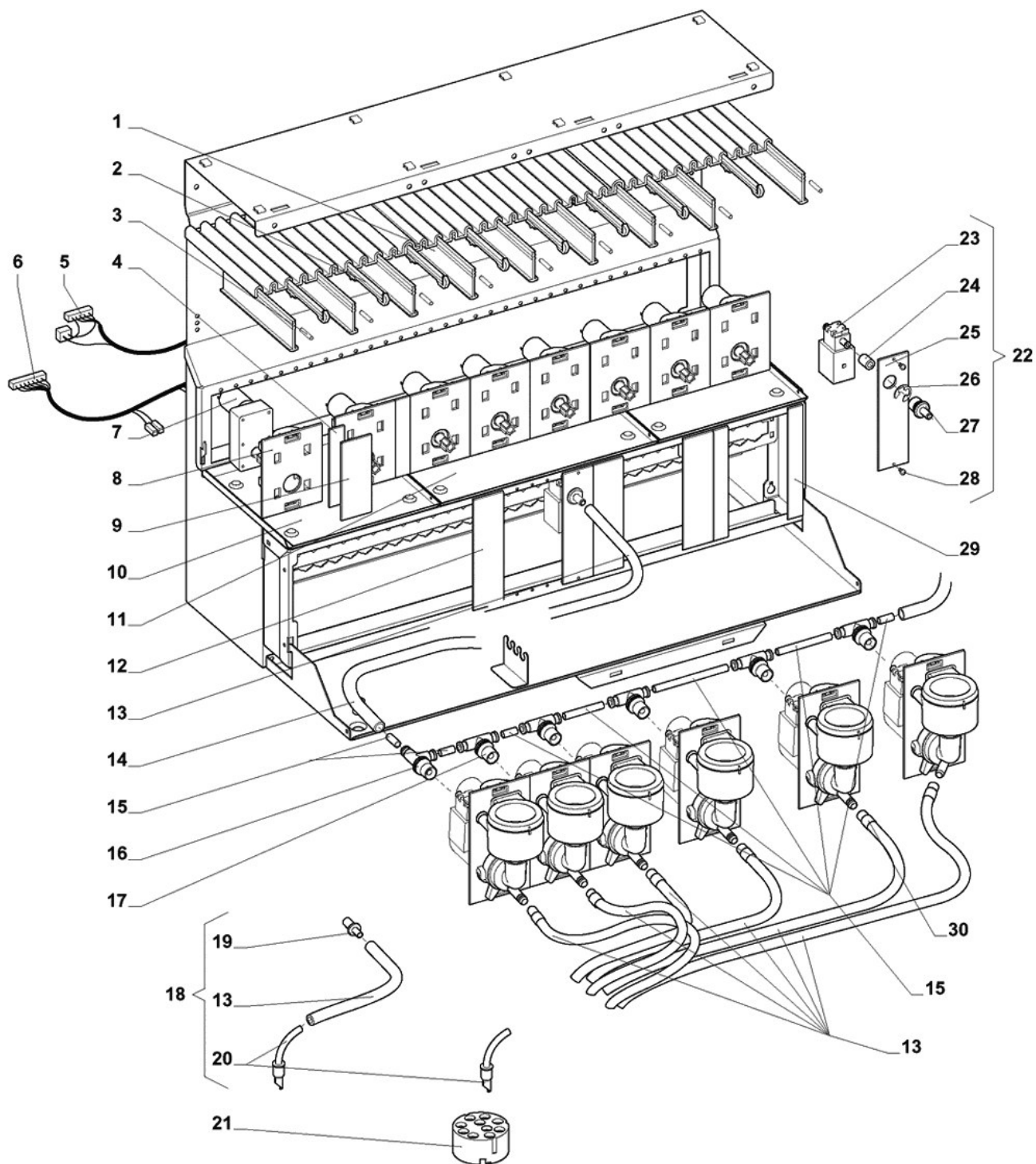


Table :10 - Mixing Unit, IN

|    | Code      | Description                   | Notes |
|----|-----------|-------------------------------|-------|
| 1  | 39275000  | GUIDE FOR CANISTER            |       |
| 2  | 39587000  | SPRING FOR CANISTER           |       |
| 3  | 09157216  | TENSION PIN 3X16              |       |
| 4  | 39588500  | BLANKING MODULE F MOTOR 20MM  |       |
| 5  | 42387600  | HARNESS, INGREDIENT MOTORS IN |       |
| 6  | 42387500  | HARNESS, INGREDIENT MOTORS    |       |
| 7  | 41534300  | INGREDIENT MOTOR              |       |
| 9  | 39588600  | BLANKING MODULE F MOTOR 40MM  |       |
| 10 | 30955500  | UNDER TRAY, SMALL             |       |
| 11 | 30955600  | UNDER TRAY, LARGE             |       |
| 12 | 39589300  | BLANKING MODULE F MIX 40 MM   |       |
| 13 | 39470705  | HOSE Ø12, BLUE                |       |
| 14 | 39470504  | HOSE Ø13/Ø9                   |       |
| 15 | 39474809  | NYLON HOSE Ø8/Ø6              |       |
| 16 | 39591500  | L-PIECE F MIXER VALVE         |       |
| 17 | 39589500  | T-PIECE F MIX VALVE           |       |
| 18 | 75803500  | IN-CRÈME KIT 7600             |       |
| 19 | 097914    | COFFEE CHOKE                  |       |
| 20 | 39729100  | SPOUT F CREAMY DRINKS, BLUE   |       |
| 21 | 39713900  | HOLDER F OUTLET SPOUTS, IN    |       |
| 22 | 31009000S | HOT WATER MODULE              |       |
| 23 | 41532800  | VALVE, 24VDC                  |       |
| 24 | 39470505  | SILICONE HOSE                 |       |
| 25 | 39704200  | BLANKING MODULE, HOT WATER    |       |
| 26 | 09124315  | RETAINING RING U15X1,0        |       |
| 27 | 39704100  | CONNECTING PIECE              |       |
| 28 | 48840302  | FIXTURE                       |       |
| 29 | 39589400  | BLANKING MODULE F MIX 20 MM   |       |
| 30 | 75802600  | CIFRE RINGS 1-7               |       |

Table :11 - Mixing Funnel + Extraction

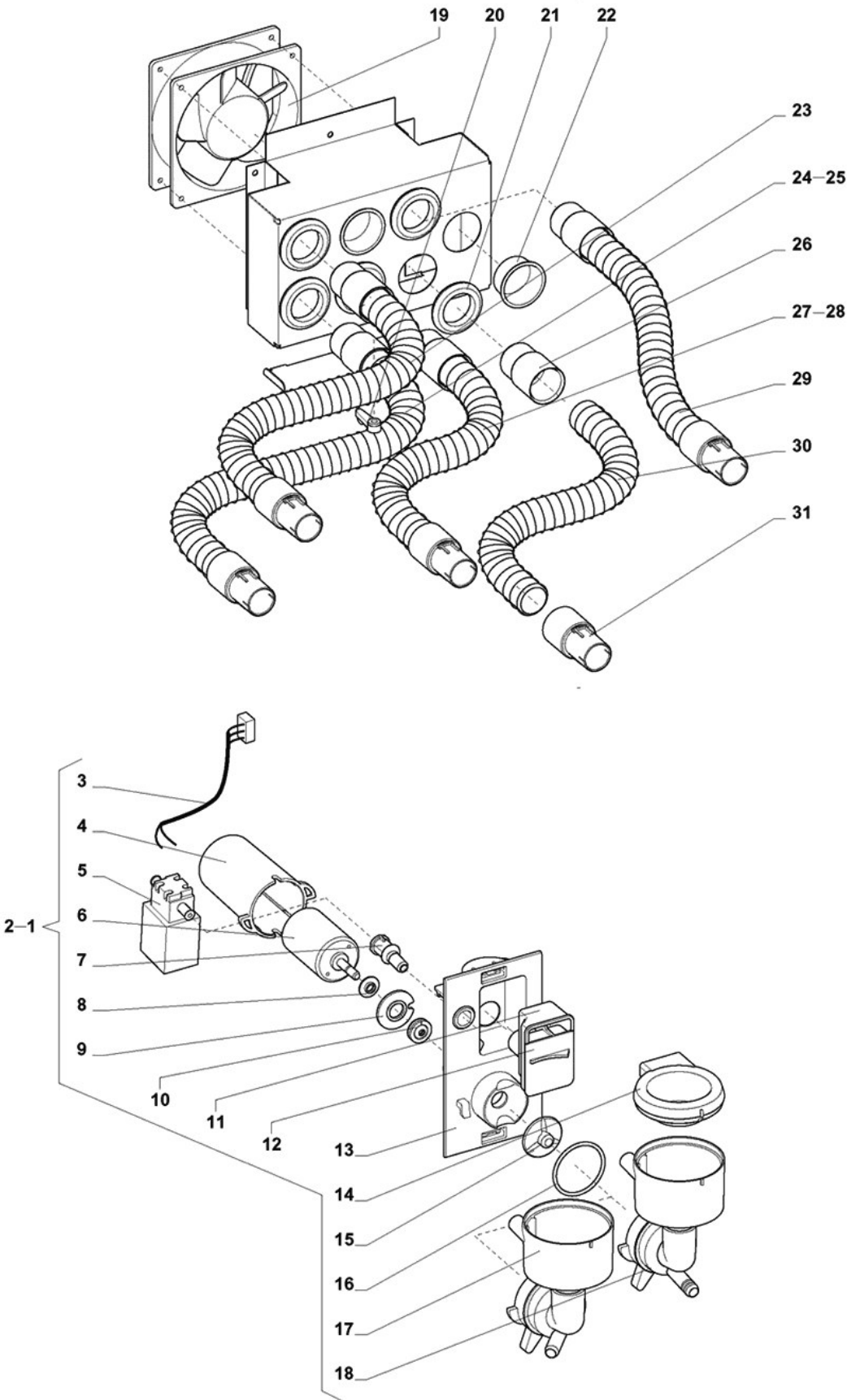


Table :11 - Mixing Funnel + Extraction

|    | Code       | Description                    | Notes                      |
|----|------------|--------------------------------|----------------------------|
| 1  | 30940100S  | MIX. FUNNEL MODULE WHIP.WHEEL  |                            |
| 2  | 31051700S  | MIX FUNNEL MODULE, 45GR OUTLET |                            |
| 3  | 42386500   | HARNESS, WHIPPER               |                            |
| 4  | 39590300   | LOCKING RING F MIXING MOTOR    |                            |
| 5  | 41532800   | VALVE, 24VDC                   |                            |
| 6  | 41534900   | WHIPPER MOTOR, 24VDC           | from serial number 648735  |
| 6  | 41532900   | WHIPPER MOTOR, 24VDC           | until serial number 648734 |
| 7  | 39589600   | GASKET FOR MIXING VALVE        |                            |
| 8  | 39733800   | SLINGER RING                   |                            |
| 9  | 39594500   | COMPRESSION GASKET             |                            |
| 10 | 39599400   | SEALING FOR MIXING MOTOR       |                            |
| 11 | 39590400   | POWDER TRAP, REAR PART         |                            |
| 12 | 39590500   | POWDER TRAP, FRONT             |                            |
| 13 | 39729700S  | MODULE PLATE + V-RING          |                            |
| 14 | 39719300   | HOOD F MIXING FUNNEL           |                            |
| 15 | 39590000   | WHIPPER WHEEL                  |                            |
| 16 | 39400641   | O-RING 35X3, BLUE              |                            |
| 17 | 31083300   | MIX. FUNNEL 45GR W LOCK. RING  |                            |
| 18 | 31083200   | MIXING FUNNEL W LOCKING RING   |                            |
| 19 | 41533400   | FAN                            |                            |
| 20 | 39417002   | TURNBUCKLE                     |                            |
| 21 | 39701300   | RUBBER BUSHING                 |                            |
| 22 | 39400257   | PLASTIC CAP NO.57              |                            |
| 23 | 30967603   | SPIRAL HOSE W CONNECTION 430MM |                            |
| 24 | 30967604   | SPIRAL HOSE W CONNECTION 550MM |                            |
| 25 | 30967605   | SPIRAL HOSE W CONNECTION 500MM |                            |
| 26 | 4988.00147 | BUSH FOR EXTRACTION            |                            |
| 27 | 30967601   | SPIRAL HOSE W CONNECTION 220MM |                            |
| 28 | 30967602   | SPIRAL HOSE W CONNECTION 350MM |                            |
| 29 | 30967606   | SPIRAL HOSE W CONNECTION 150MM |                            |
| 30 | 39701400   | SPIRAL HOSE Ø30/25             |                            |
| 31 | 39590600   | COUPLING PIECE FOR EXTRACTION  |                            |

Table :12 - Branch Pine

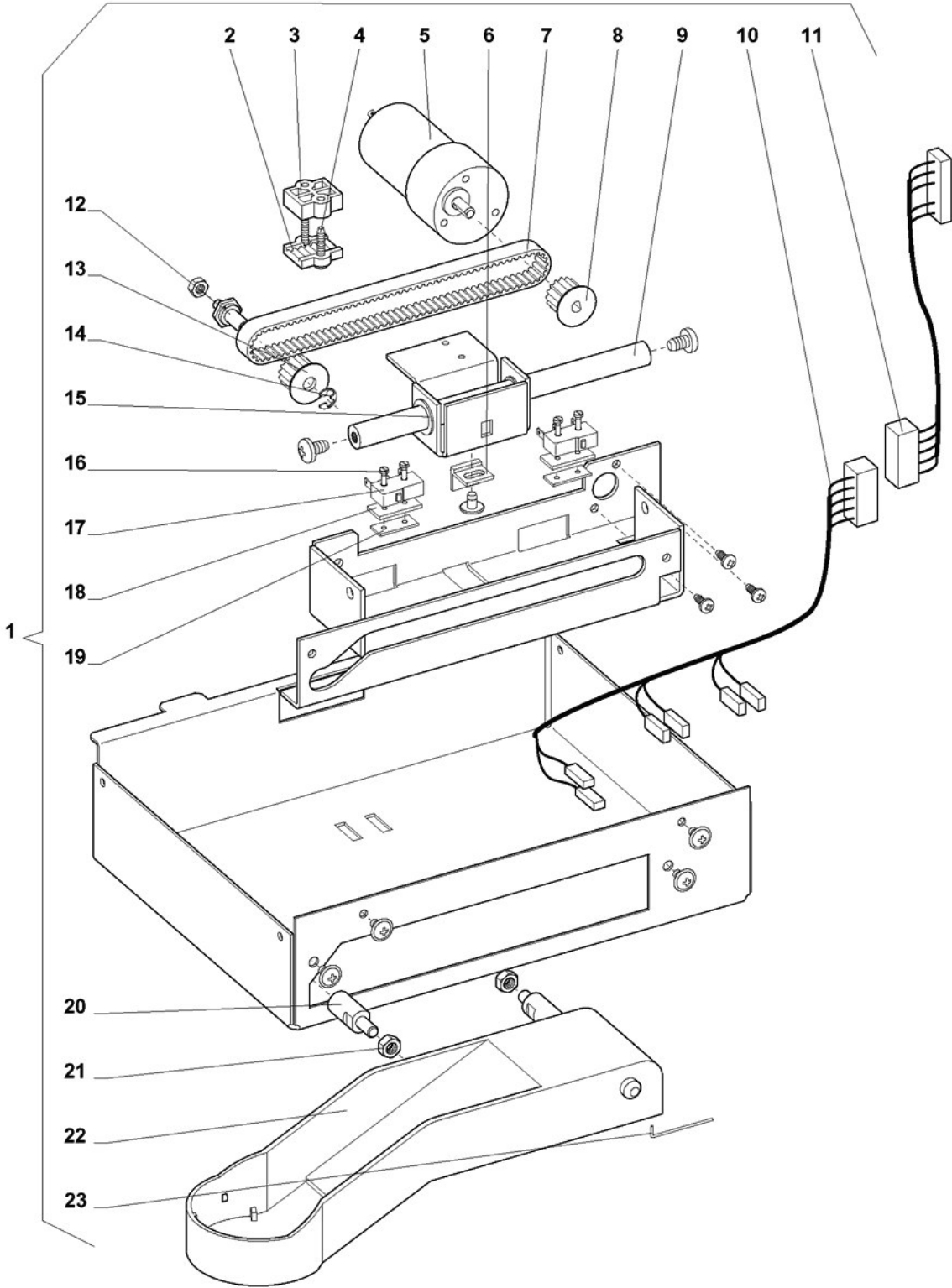


Table :12 - Branch Pipe

|    | Code      | Description                    | Notes |
|----|-----------|--------------------------------|-------|
| 1  | 31146700S | BRANCH PIPE ASSEMBLY           |       |
| 2  | 39535600  | HOLDER F BELT                  |       |
| 3  | 39542300  | INTERMEDIARY PIECE F BELT      |       |
| 4  | 09026606  | SCREW GFPX M3X16               |       |
| 5  | 41529624  | MOTOR                          |       |
| 6  | 39542700  | ACTIVATING ANGLE               |       |
| 7  | 39535804  | TOOTHED BELT                   |       |
| 8  | 39557800  | WHEEL, TOOTHED BELT Z=16, Ø5   |       |
| 9  | 39641400  | SHAFT F. DRIVE                 |       |
| 10 | 42388700  | HARNESS, BRANCH PIPE+MOTOR     |       |
| 11 | 42386900  | HARNESS, BRANCH PIPE           |       |
| 12 | 39641200  | SHAFT F. PULLEY                |       |
| 13 | 39703200  | PULLEY F TOOTHED BELT Z=16, Ø6 |       |
| 14 | 09124110  | RETAINING RING                 |       |
| 15 | 39436801  | SLIDE BEARING Ø10              |       |
| 16 | 09009409  | CHEESE HEAD SCREW M2X12        |       |
| 17 | 41305700  | MICRO SWITCH                   |       |
| 18 | 39637700  | ADJUST.PIECE F MICRO SWITCH    |       |
| 19 | 30448800  | THREADING PIECE                |       |
| 20 | 39641500  | SLIDING PIN                    |       |
| 21 | 09083225  | NUT M5                         |       |
| 22 | 39554400  | HOLDER F MIXER                 |       |
| 23 | 39642100  | LOCKING SPRING                 |       |



Table :13 - Ingredient Canisters. 4 lt

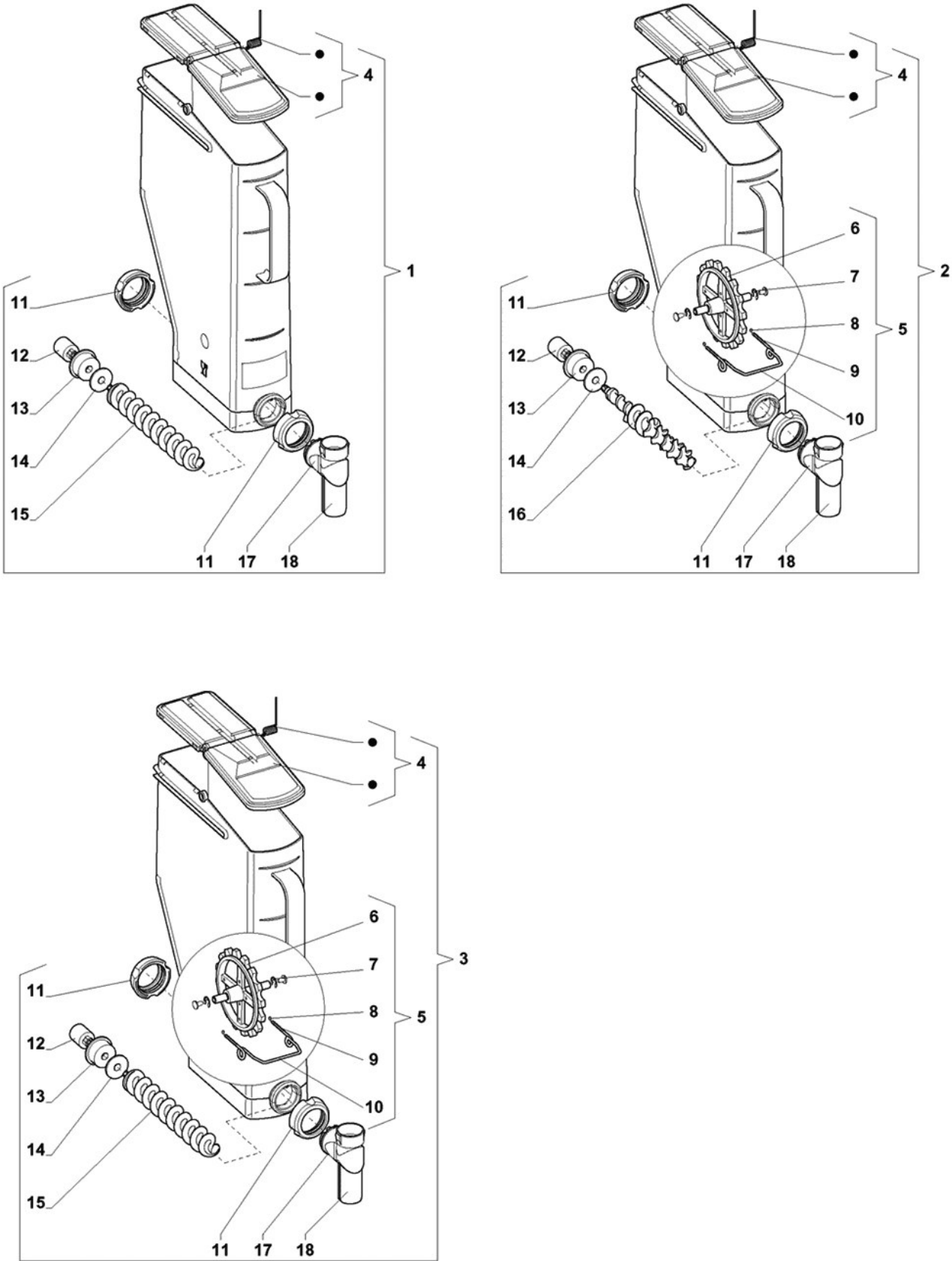


Table :13 - Ingredient Canisters, 4 lt

|    | Code      | Description              | Notes |
|----|-----------|--------------------------|-------|
| 1  | 30966200S | INGREDIENT CANISTER 4 LT |       |
| 2  | 31000500S | INGREDIENT CANISTER 4 LT |       |
| 3  | 30934700S | INGREDIENT CANISTER 4 LT |       |
| 4  | 30948700S | LID F CANISTER 4 LT      |       |
| 5  | 30949100S | STIRRING WHEEL, MOUNT.   |       |
| 6  | 39519700  | STIRRING WHEEL           |       |
| 7  | 09124306  | RETAINING RING           |       |
| 8  | 29595800  | STIRRING EYE             |       |
| 9  | 29609900  | SPRING                   |       |
| 10 | 39271900  | BRACE                    |       |
| 11 | 39586200  | NUT FOR CANISTER         |       |
| 12 | 39446600  | COUPLING                 |       |
| 13 | 39586300  | SEALING BUSHING          |       |
| 14 | 39593600  | FELT WASHER              |       |
| 15 | 39633900  | AUGER, FULL              |       |
| 16 | 39634000  | AUGER, REDUCED           |       |
| 17 | 39587300  | OUTLET SPOUT             |       |
| 18 | 39587400  | OUTLET PIPE              |       |

Table :14 - Ingredient Canisters. 6 lt

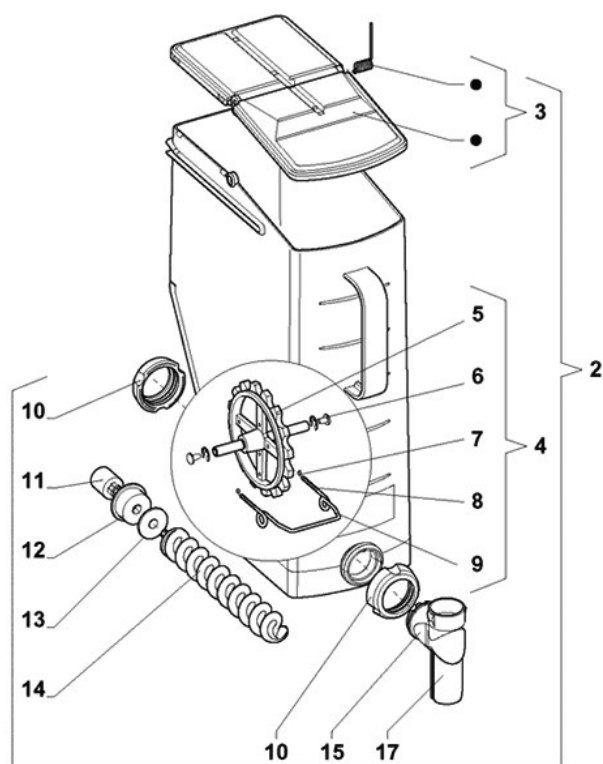
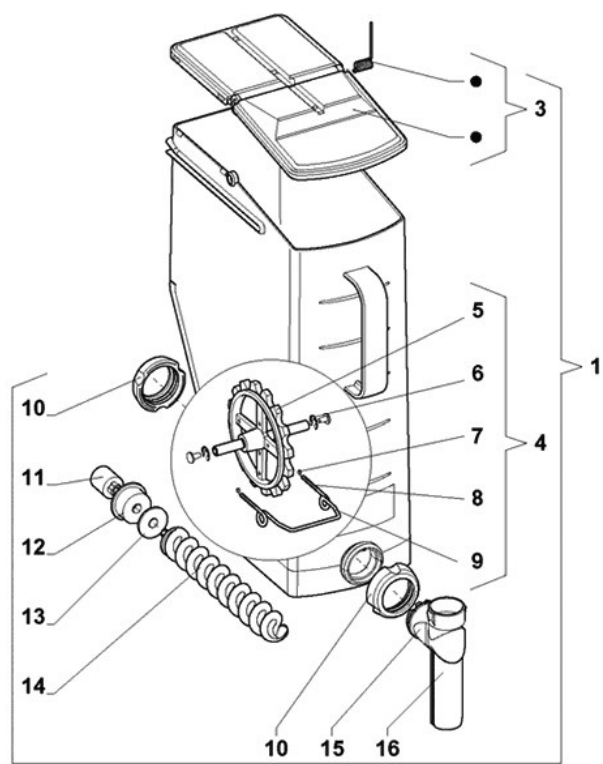


Table :14 - Ingredient Canisters, 6 lt

|    | Code      | Description                 | Notes |
|----|-----------|-----------------------------|-------|
| 1  | 31000400S | INGREDIENT CANISTER 6 LT    |       |
| 2  | 30934800S | INGREDIENT CANISTER 6 LT    |       |
| 3  | 30948800S | LID F CANISTER 6 LT         |       |
| 4  | 30949200S | STIRRING WHEEL, MOUNT. 6 LT |       |
| 5  | 39519700  | STIRRING WHEEL              |       |
| 6  | 09124306  | RETAINING RING              |       |
| 7  | 29595800  | STIRRING EYE                |       |
| 8  | 29609900  | SPRING                      |       |
| 9  | 39271900  | BRACE                       |       |
| 10 | 39586200  | NUT FOR CANISTER            |       |
| 11 | 39446600  | COUPLING                    |       |
| 12 | 39586300  | SEALING BUSHING             |       |
| 13 | 39593600  | FELT WASHER                 |       |
| 14 | 39633900  | AUGER, FULL                 |       |
| 15 | 39587300  | OUTLET SPOUT                |       |
| 16 | 39591600  | OUTLET PIPE, LONG           |       |
| 17 | 39587400  | OUTLET PIPE                 |       |

Table :15 - Ingredient Canisters. 6 lt. IN

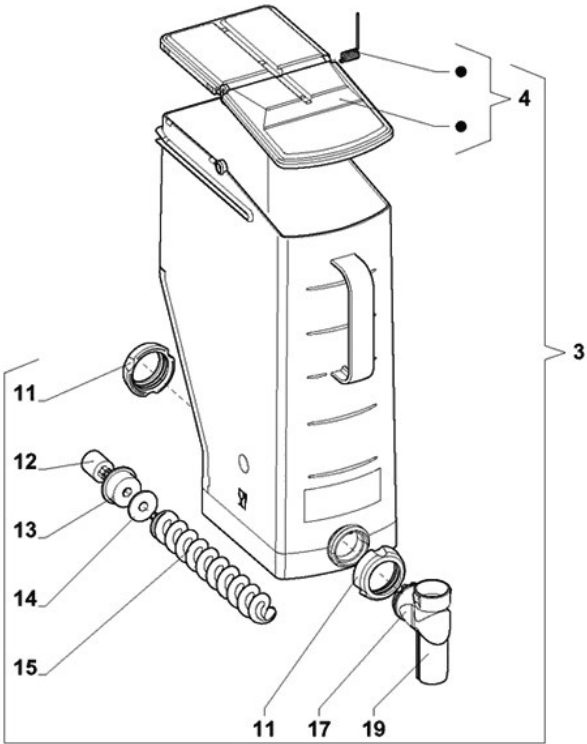
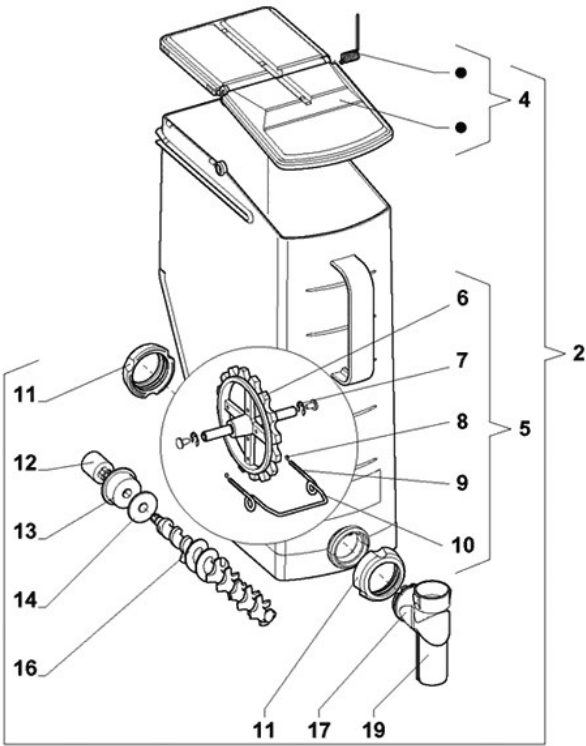
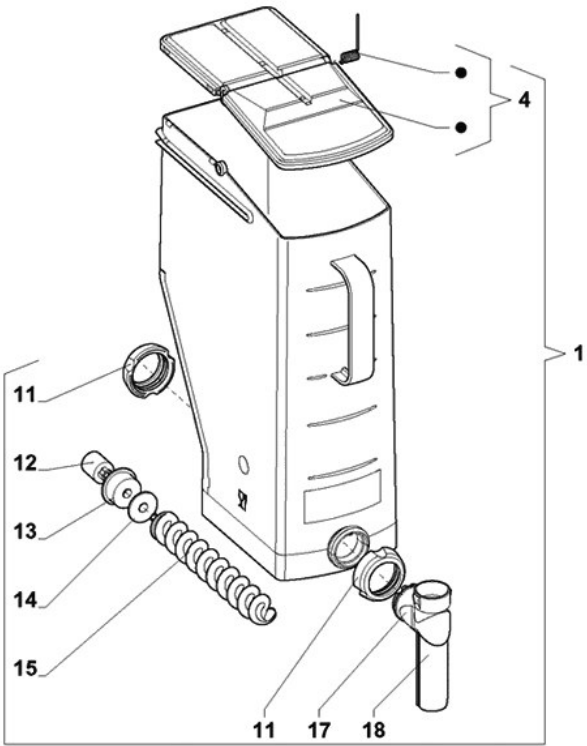


Table :15 - Ingredient Canisters, 6 lt, IN

|    | Code      | Description                 | Notes |
|----|-----------|-----------------------------|-------|
| 1  | 31032800S | INGREDIENT CANISTER 6 LT    |       |
| 2  | 31002400S | INGREDIENT CANISTER 6 LT    |       |
| 3  | 31002300S | INGREDIENT CANISTER 6 LT    |       |
| 4  | 30948800S | LID F CANISTER 6 LT         |       |
| 5  | 30949200S | STIRRING WHEEL, MOUNT. 6 LT |       |
| 6  | 39519700  | STIRRING WHEEL              |       |
| 7  | 09124306  | RETAINING RING              |       |
| 8  | 29595800  | STIRRING EYE                |       |
| 9  | 29609900  | SPRING                      |       |
| 10 | 39271900  | BRACE                       |       |
| 11 | 39586200  | NUT FOR CANISTER            |       |
| 12 | 39446600  | COUPLING                    |       |
| 13 | 39586300  | SEALING BUSHING             |       |
| 14 | 39593600  | FELT WASHER                 |       |
| 15 | 39633900  | AUGER, FULL                 |       |
| 16 | 39634000  | AUGER, REDUCED              |       |
| 17 | 39587300  | OUTLET SPOUT                |       |
| 18 | 39591600  | OUTLET PIPE, LONG           |       |
| 19 | 39587400  | OUTLET PIPE                 |       |