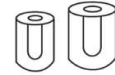


PS

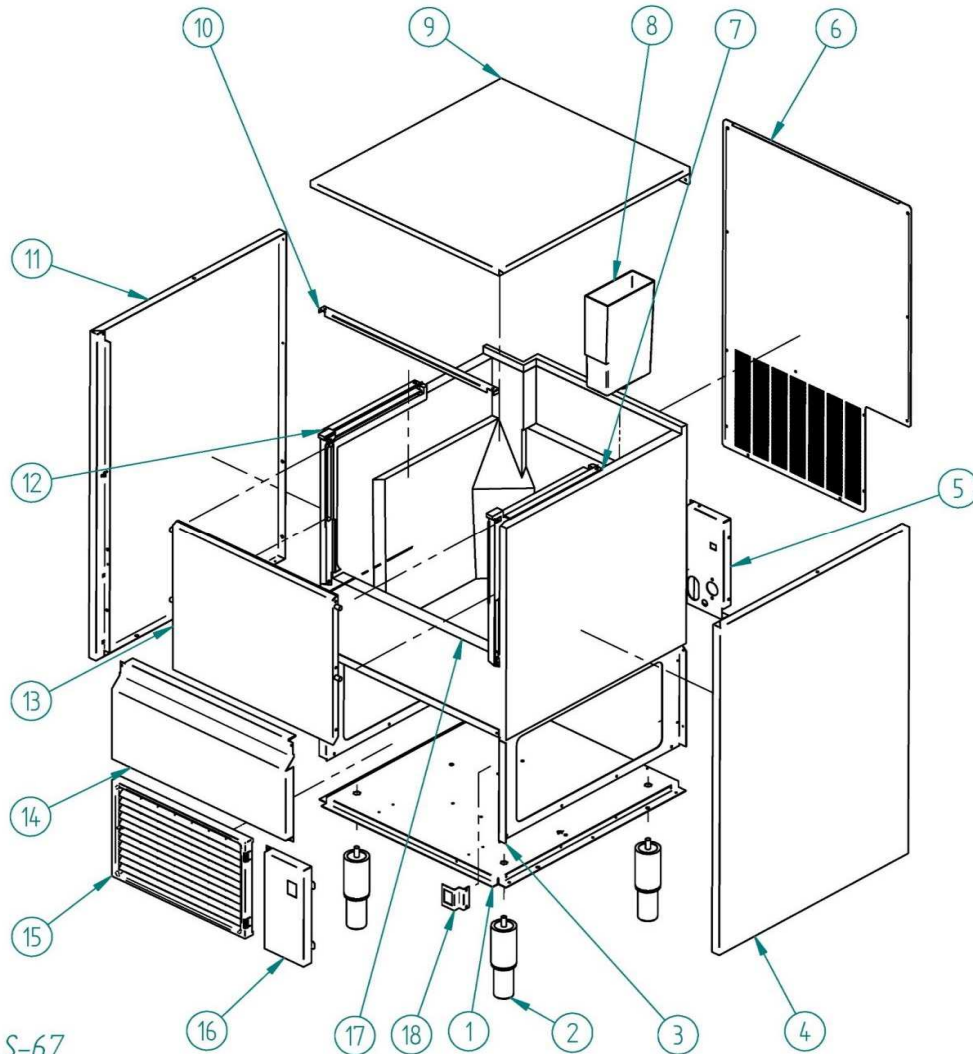


DESPIECE / REPUESTOS
EXPLODED VIEW / SPARE PARTS
EXPLOSIONSZEICHNUNG / ERSATZTEILE
VUE ÉCLATÉE / PIÈCES DÉTACHÉES
ESPLOSO / RICAMBI

CABINET



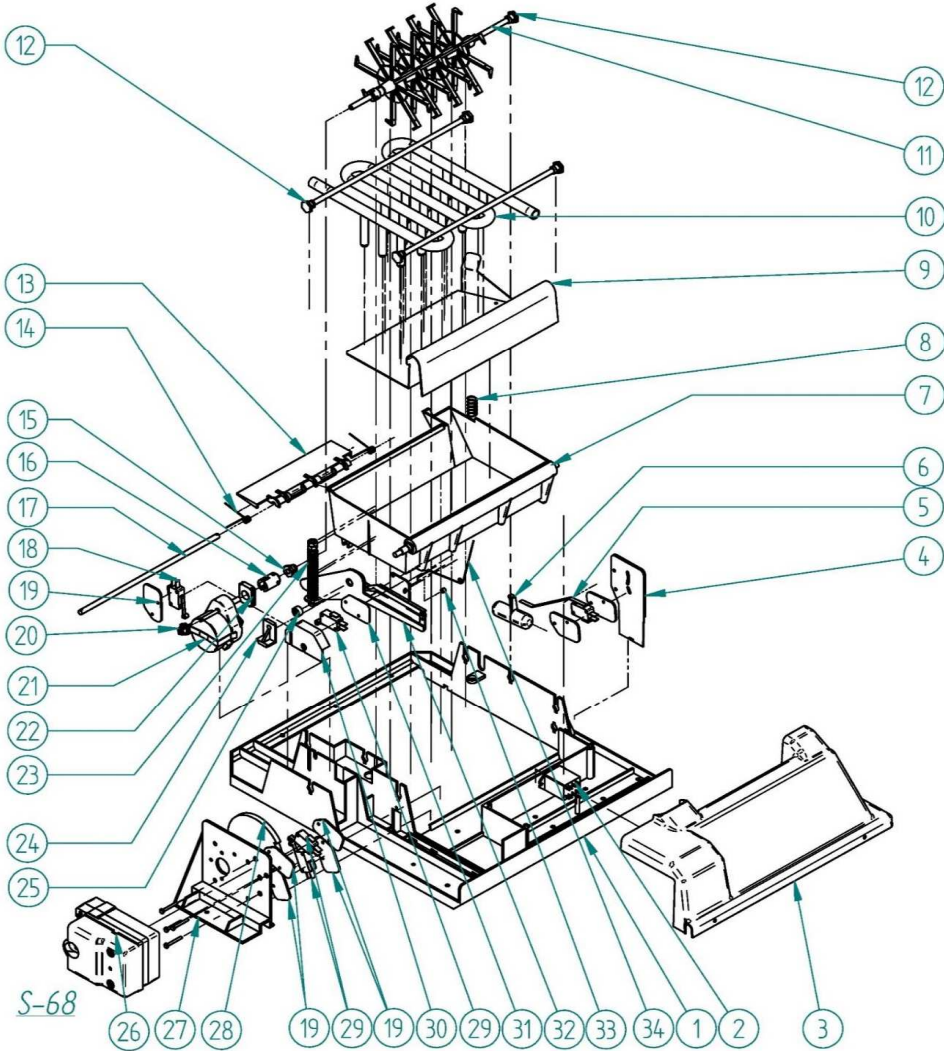
PS



		NAME			MODEL			
		22	32	42	52	62	82	122
1	BASEMENT	8179			8510	8515	8551	8572
2	LEG	4307			1478			
3	BRIDGE ANGLE	8054			8501	8516	8552	8573
4	RIGHT PANEL	8057	8059		8487	8517	8553	
5	CONNECTION COLUMN	8055			-	-	8563	
6	REAR COVER	8063	8064		8490	8520	8556	8557
7	RIGHT DOOR GUIDE	1700			1706	1706	1706	1706
8	WATER COLLECTOR	593						
9	TOP COVER	8056			8491	521 + 3064	559 + 6308	560 + 4326
10	UPPER BRACKET	8217			8495	8523		8525
11	LEFT PANEL	8058	8060		8488	8518	8554	
12	LEFT DOOR GUIDE	1701			1707	1707	1707	1707
13	DOOR	8512			8579	30541	30542	30543
14	LOWER FRONT PANEL	8061	8062		8489	8519	8555	8558
15	FRONT GRID	8513			8719	8720		
16	FRONT PANEL	-	-	-	-	-	-	-
17	ISOLATED STOCK BIN	7510	8413		7513	7514	7515	7516
18	SWITCH SUPPORT	7764			8494			

S-67

BIN & HIDRAULICS PARTS PS 22-32-42

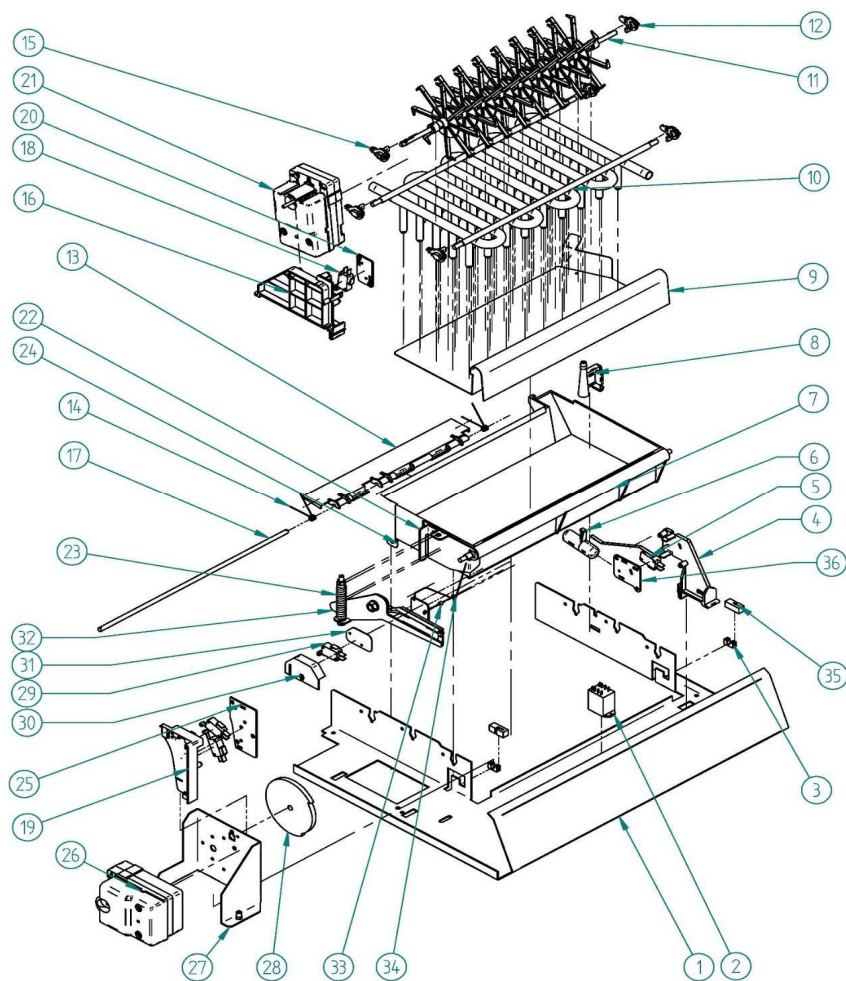


NAME		MODEL		
		22	32	42
1	MANUFACTURING HEAD		175	
2	RELAY		1483	
3	COVER HEAD		1982	
4	MICRO BUOY SUPPORT		595	
5	MICRO BUOY		388	
6	BUOY		8075	
7	WATER TRAY	5360	5361	
8	WATER INPUT SPRING		355	
9	EJECTOR ICE	5537	5532	
10	EVAPORATOR	7984	7989	
11	AGITATOR		8074	
12	EVAPORATOR SUPPORT		564	
13	FLANGED LIMIT		31435	
14	SPRING POSITIONING FLANGED		817	
15	AGITATOR AND WATER TRAY BEARING		556	
16	JOINT BUSHING		46	
17	FLANGED AXE		12	
18	MICRO		8079	
19	MICRO PROTECTION		5212	
20	REAR BEARING		554	
21	PADDLE MOTOR		5364	
22	FRONT BEARING		559	
23	SECURITY SPRING		217	
24	AXE TRAY SUPPORT		558	
25	WATER TRAY AXE SUPPLEMENT		674	
26	COMPLETE TILTER MOTOR	8071K		
27				
28				
29				
30	LEFT MICRO BOX		372	
31	MICRO PROTECTION		5211	
32	CONNECTING ROD WATER TRAY		68	
33	STOP MECHANISM BUSHING		52	
34	STOP MACHINE SPRING		31508	

BIN &HIDRAULICS PARTS PS 52-62-82-122

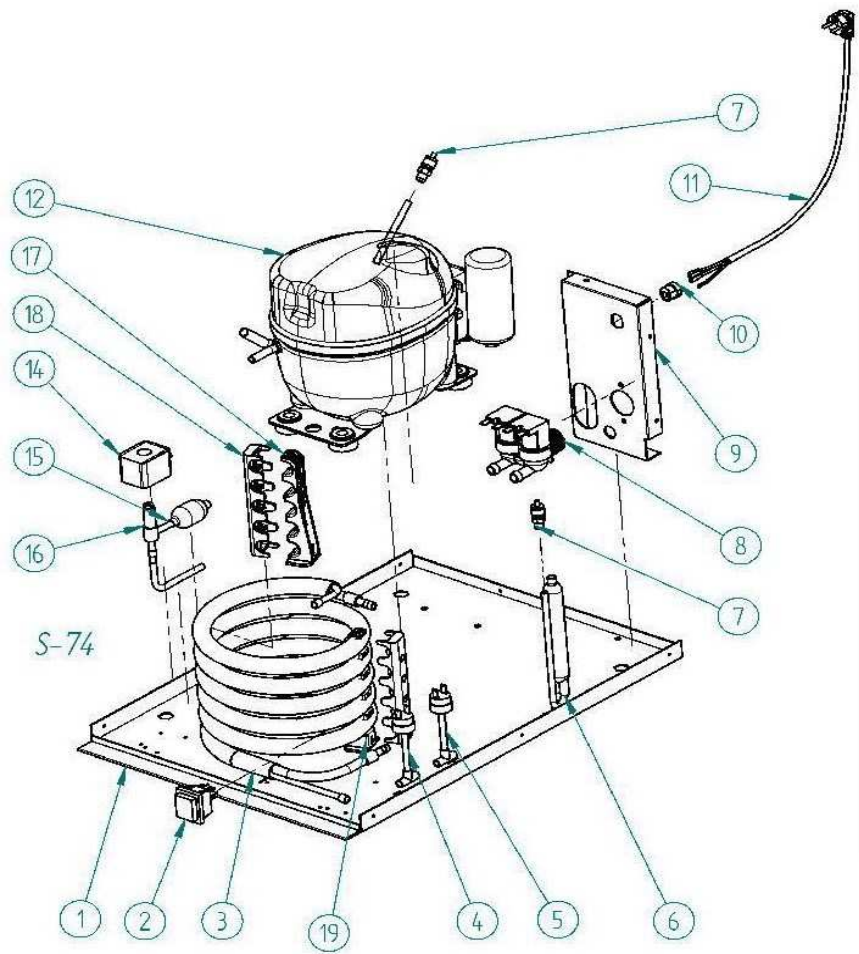


PS



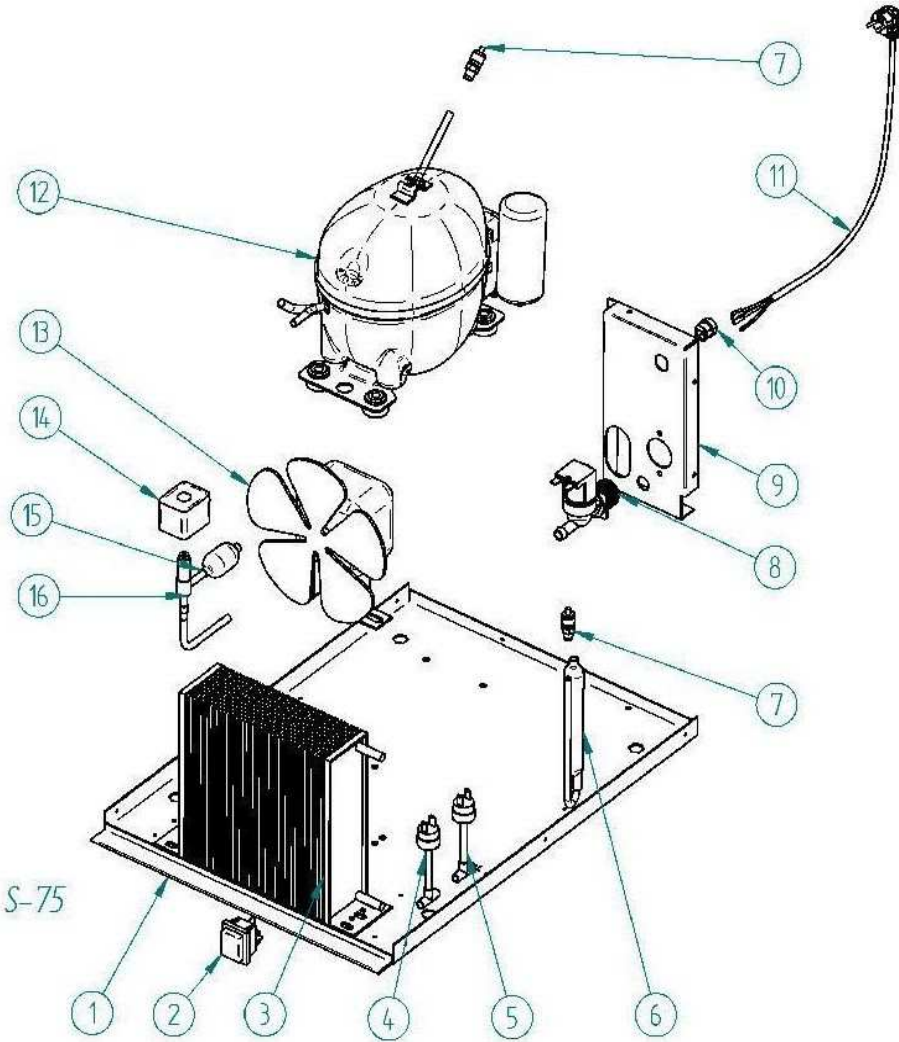
NAME		MODEL			
		52	62	82	122
1	MANUFACTURING HEAD	8496	8526	8527	8528
2	RELAY	1483			
3	OPEN BEARING	168			
4	MICRO BUOY SUPPORT	6844			
5	MICRO BUOY	388			
6	BUOY	8075			
7	WATER TRAY	5203	5204	5205	5273
8	WATER INPUT	6843			
9	EJECTOR ICE	8727	5539	5540	5530
10	EVAPORATOR	7998	8022	8027	8032
11	AGITATOR	8503	8541	8545	8546
12	BLIND EVAPORATOR SUPPORT	6481			
13	FLANGED LIMIT	810	811	812	812
14	SPRING POSITIONING BUOY	817			
15	AGITATOR & AXE SUPPORT	6842			
16	AGITATOR MOTOR SUPPORT	6848			
17	FLANGED AXE	813	814	815	815
18	MICRO	8079			
19	MICRO & TURNING MOTOR SUPPORT	6846			
20	AGITATOR MOTOR SUPPORT	6849			
21	GEAR MOTOR	6837			
22	SPRING SUPPORT	56			
23	SECURITY SPRING TRAY	68			
24	AXE FLANGED SUPPORT	816			
25	MICRO & TURNING MOTOR SUPPORT	6847			
26	GEAR REDUCER	8507			
27	TURNING MOTOR SUPPORT	8497	8497	8497	8497
28	ACTIVATOR WHEEL	5010			
29	MICRO	387			
30	LEFT MICRO BOX	372			
31	MICRO PROTECTION	5211			
32	CONNECTING ROD WATER TRAY	68			
33	STOP MECHANISM BUSHING	52			
34	STOP MACHINE SPRING	201			
35	FIXING CLAMP	178			
36	MICRO BUOY SUPPORT	6845			
35	FLOAT WITH MICRO	30201			

WATER CONDENSER



		NAME			MODEL			
		22	32	42	52	62	82	122
1	BASE PLATE	8179			8510	8515	8551	8572
2	SWITCH	2287						
3	WATER CONDENSER	8483			5243	5017	5018	
4	CONDENSATION PRESURE SWITCH	7476						
5	SAFETY PRESSURE SWITCH	334						
6	DEHYDRATION FILTER	449			1717			
7	LOAD VALVE	335						
8	INPUT WATER VALVE	404						
9	COLUMN	8055			8493	8521	8559	8560
10	HOLE FOR CORDS	8411						
11	ELECTRIC SUPPLY CABLE	408						
12	COMPRESSOR	6838		6005	6006	6515	6516	6007
14	COIL	6906			5173			
15	FILTER	448						
16	HOT GAS VALVE	6904			762			
17	LOW SUPPORT	4037						
18	EXTERNAL SUPPORT	4038						
19	HIGH SUPPORT	4036						

AIR CONDENSER



		NAME			MODEL			
		22	32	42	52	62	82	122
1	BASE PLATE	8179			8510	8515	8551	8572
2	SWITCH	2287						
3	AIR CONDENSER	2423			8037	8327	4157	
4	CONDENSATION PRESSURE SWITCH	7476						
5	SAFETY PRESSURE SWITCH	334						
6	DEHYDRATION FILTER	449			1717			
7	LOAD VALVE	335						
8	INPUT WATER VALVE	329						
9	COLUMN	8055			8493	8521	8559	8560
10	HOLE FOR CORDS	8411						
11	ELECTRIC SUPPLY CABLE	408						
12	COMPRESSOR	6838		6005	6006	6515	6516	6007
13	MOTOR+FAN	2170+587			28+4887	28+4231	4994+410	
14	COIL	6904			762			
15	FILTER	448						
16	HOT GAS VALVE	4037						